

OCAD University

Creative City Campus

Community Update
January 26, 2018



**IGNITE
IMAGINATION**
THE CAMPAIGN FOR
OCAD UNIVERSITY

PROJECT OVERVIEW

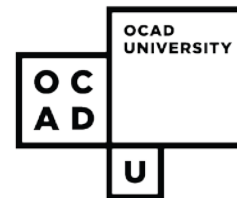
The Creative City Campus (CCC) will revitalize and expand the institution's core creative spaces on McCaul St.

New Construction: Approx. 50,000 sq. ft.

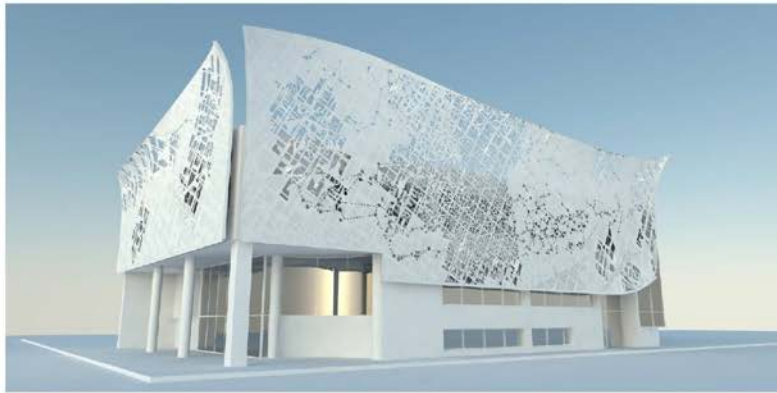
Renovation: 95,000 sq. ft.

Budget: \$60 million

Deadline: Completion by 2020



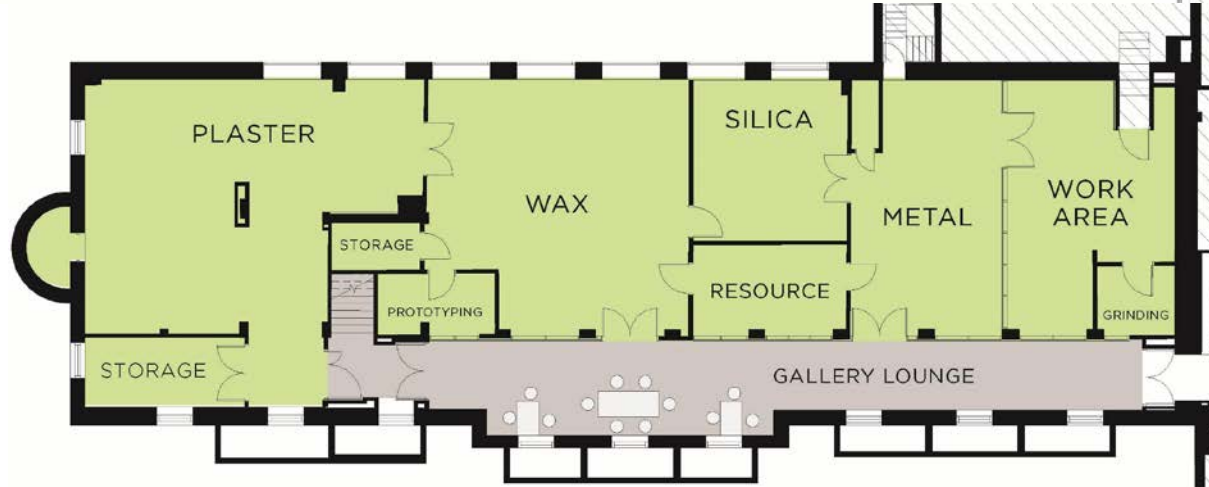
CENTRE FOR EXPERIENTIAL LEARNING IN THE ROSALIE SHARP PAVILLION



GEORGE REID HOUSE



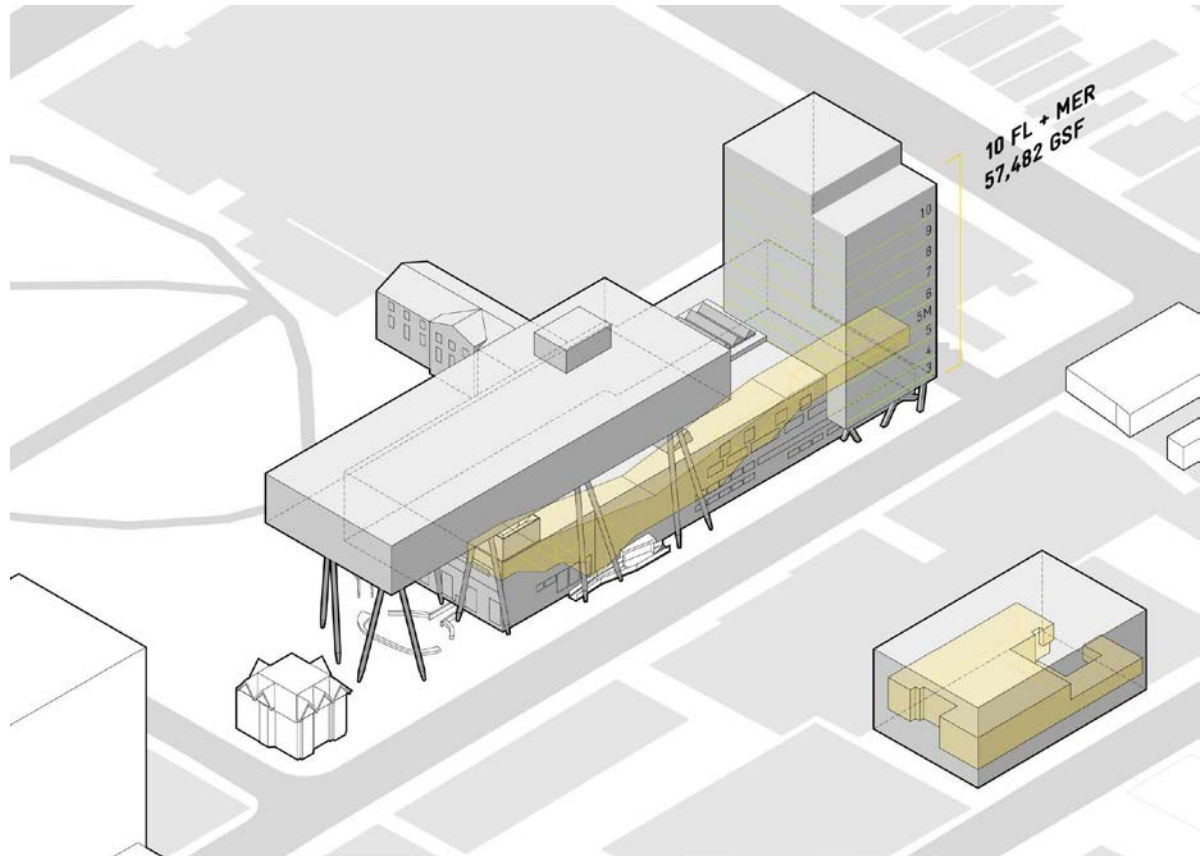
Level 2



Level 1

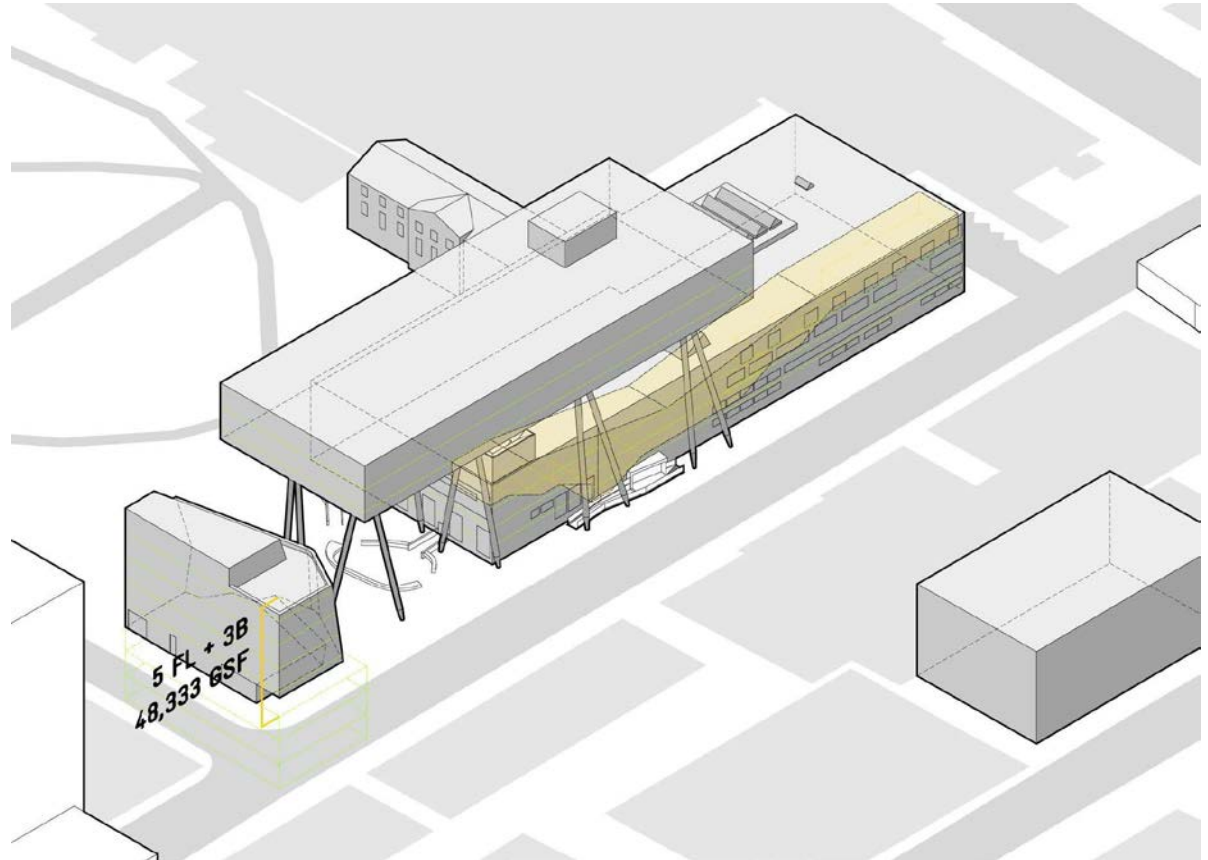
EARLY STUDY: NORTH

- Connected to main building
- New presence at Dundas and McCaul St.
- Complex phasing and site logistics
- Small floor plates
- Expensive
- Blocks iconic view
- Potential shadow issues at corner



EARLY STUDY: SOUTH

- Disconnected from main building
- Blocks iconic view of the Sharp Centre
- Small floor plates
- Site simplicity



EARLY STUDY: SOUTH EXTENSION

- Impacts views and experience of the Sharp Centre and Butterfield Park
- Requires removal of heritage buildings
- Enables relocation of the library to McCaul St.



COMMUNITY & CITY FEEDBACK

Grange Community Association (June)

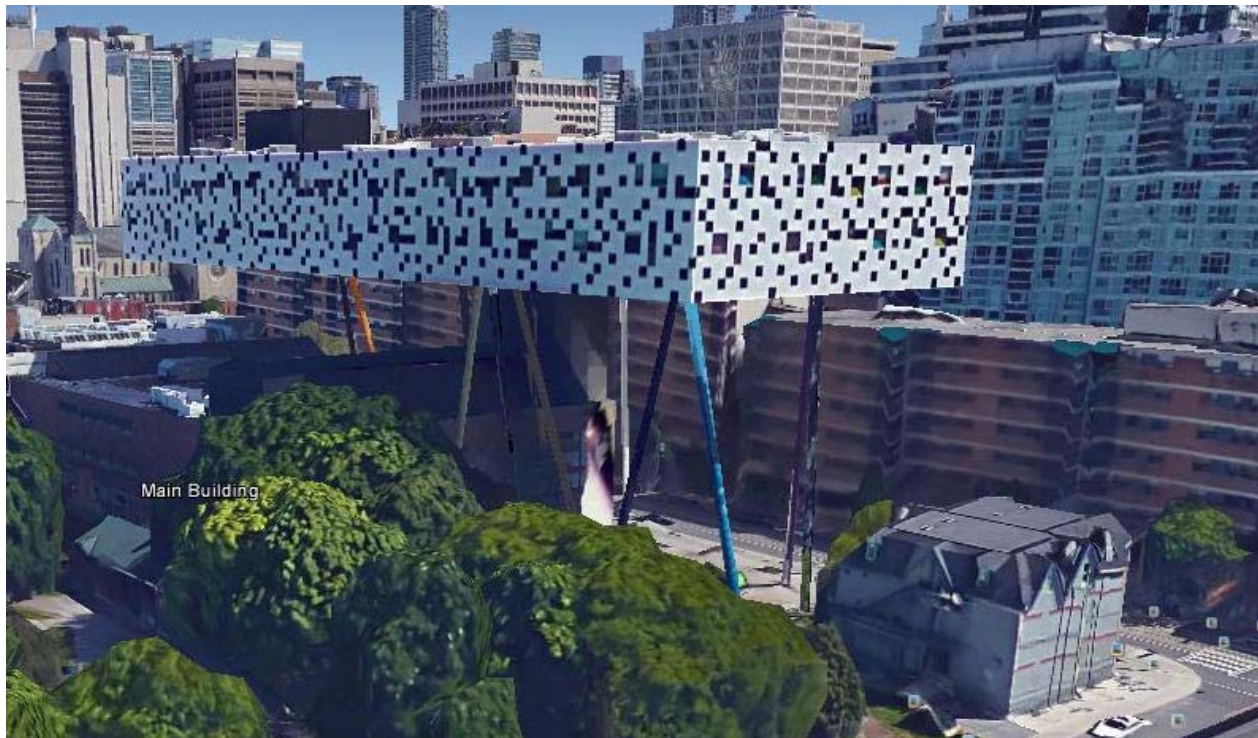
- Must honour past agreements
- Open up the process
- Consider more options
- Keep the space under Sharp Centre open and transparent
- Create visibility into workshops
- Consider display opportunities for student work

City Planning (July – September)

- Maintain heritage houses (Above Ground art store)
- Protect views and experience of Sharp Centre
- Consider impact on urban context (eg. Grange Park)

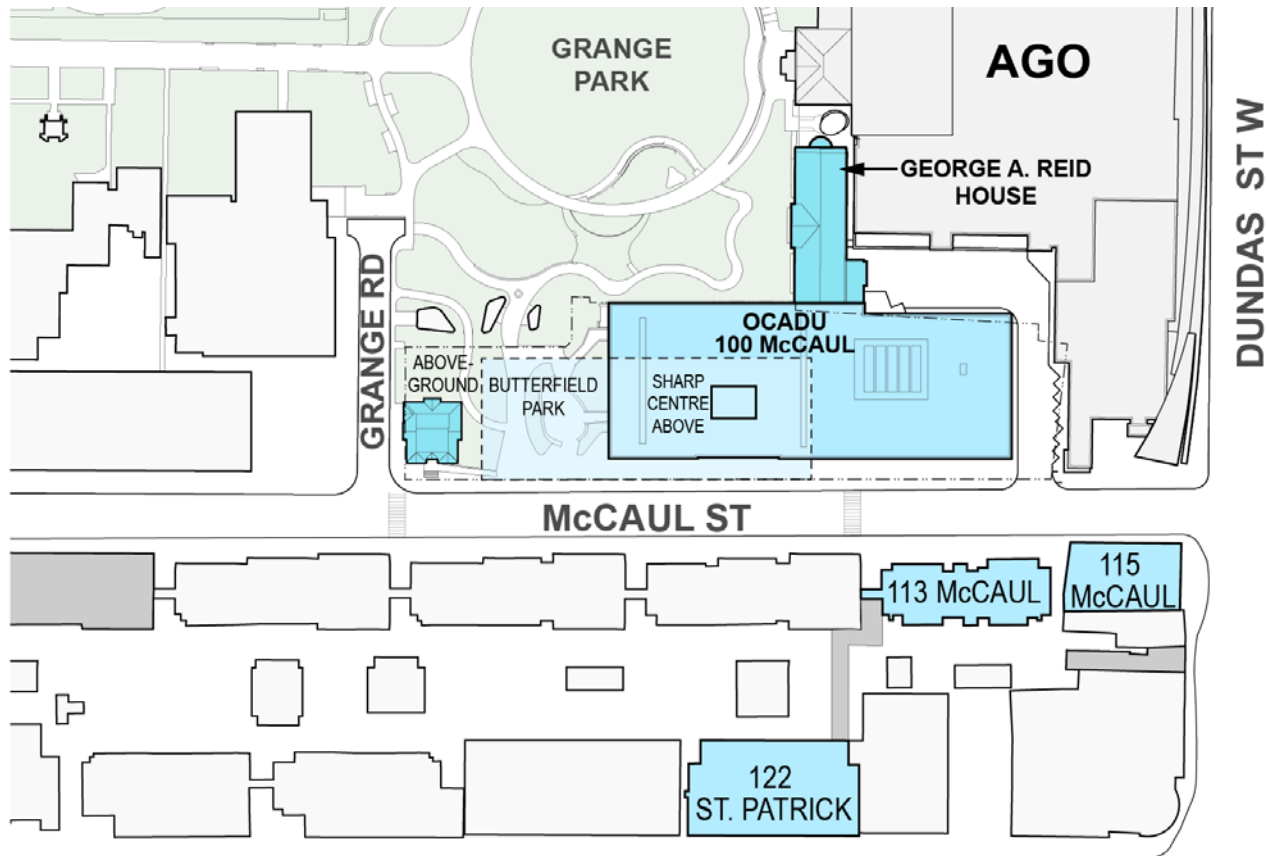
CONSIDER: EXTEND TABLE TOP

- Substantially modifies iconic Sharp Centre
- Requires demolition of Above Ground art store (heritage)
- High cost and not enough space



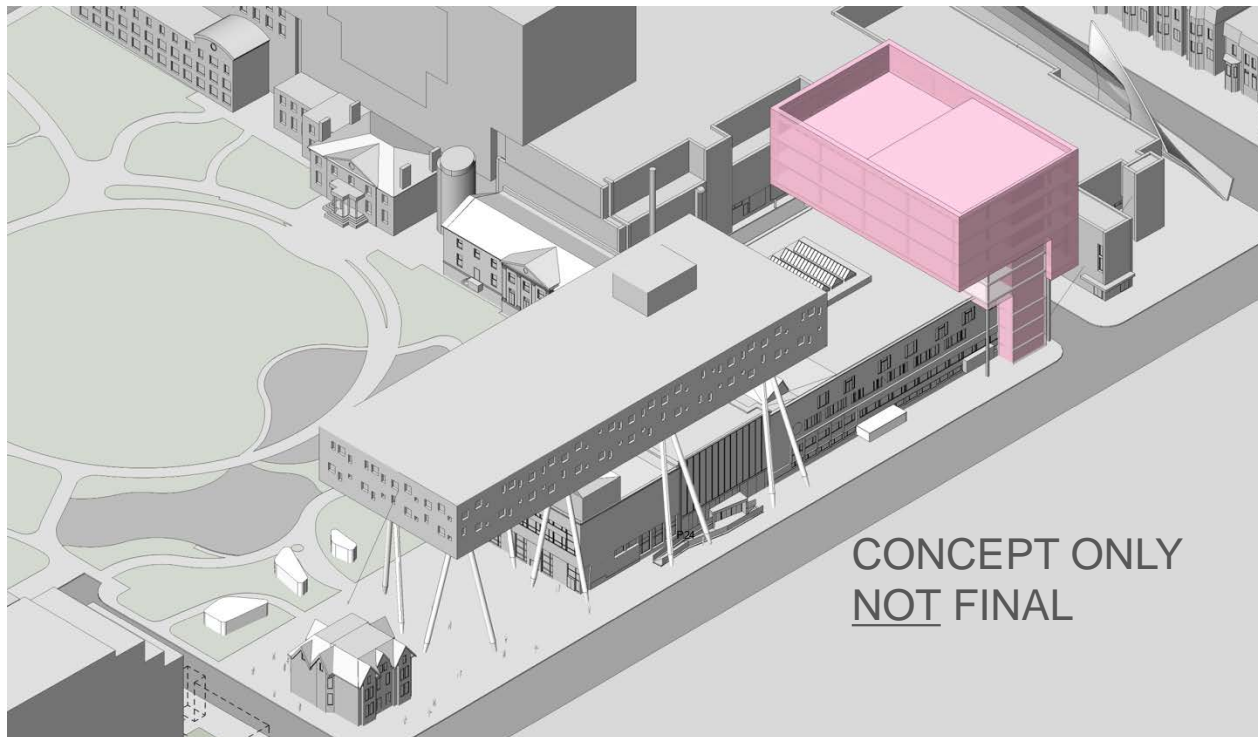
CONSIDER: ACQUIRE PROPERTIES

- High costs and few available properties
- Not feasible on project timeline; out of project scope
- No connectivity to 100 McCaul St.



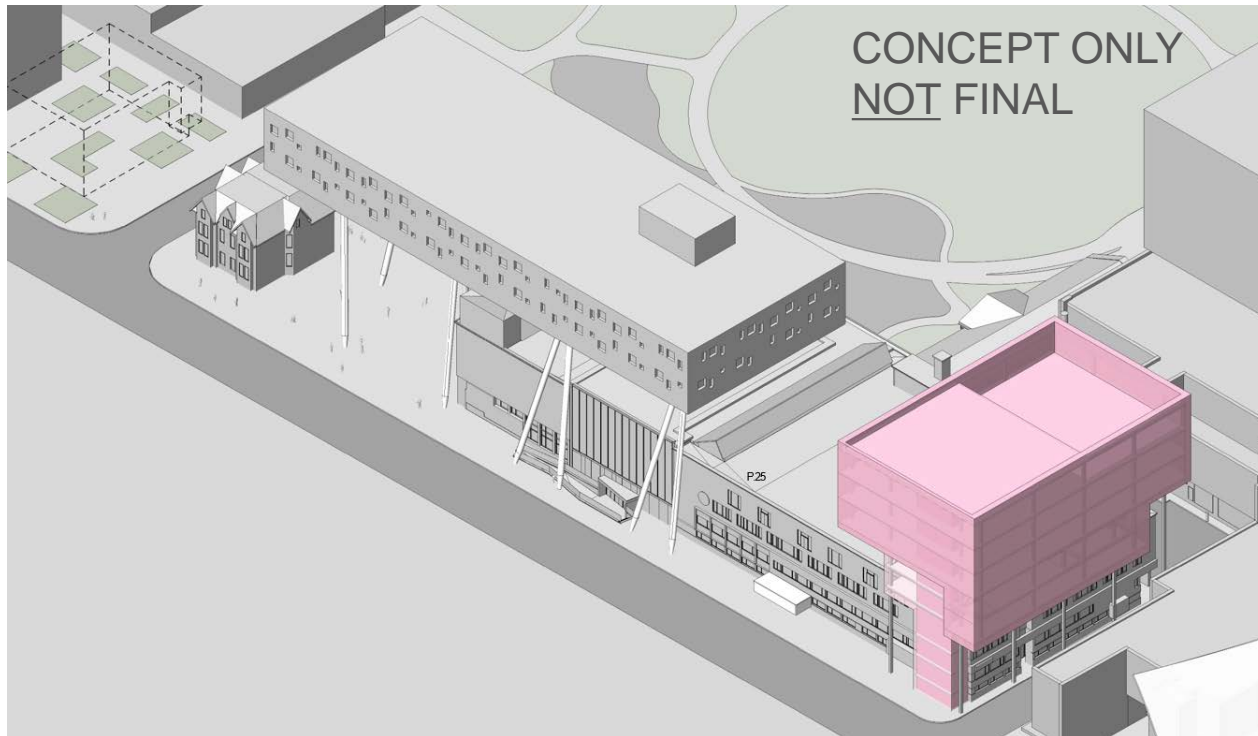
STUDY: NORTH (REVISED)

- Open space in Butterfield Park preserved; Grange Park connection
- View and experience of Sharp Centre from McCaul St. preserved
- Heritage properties preserved



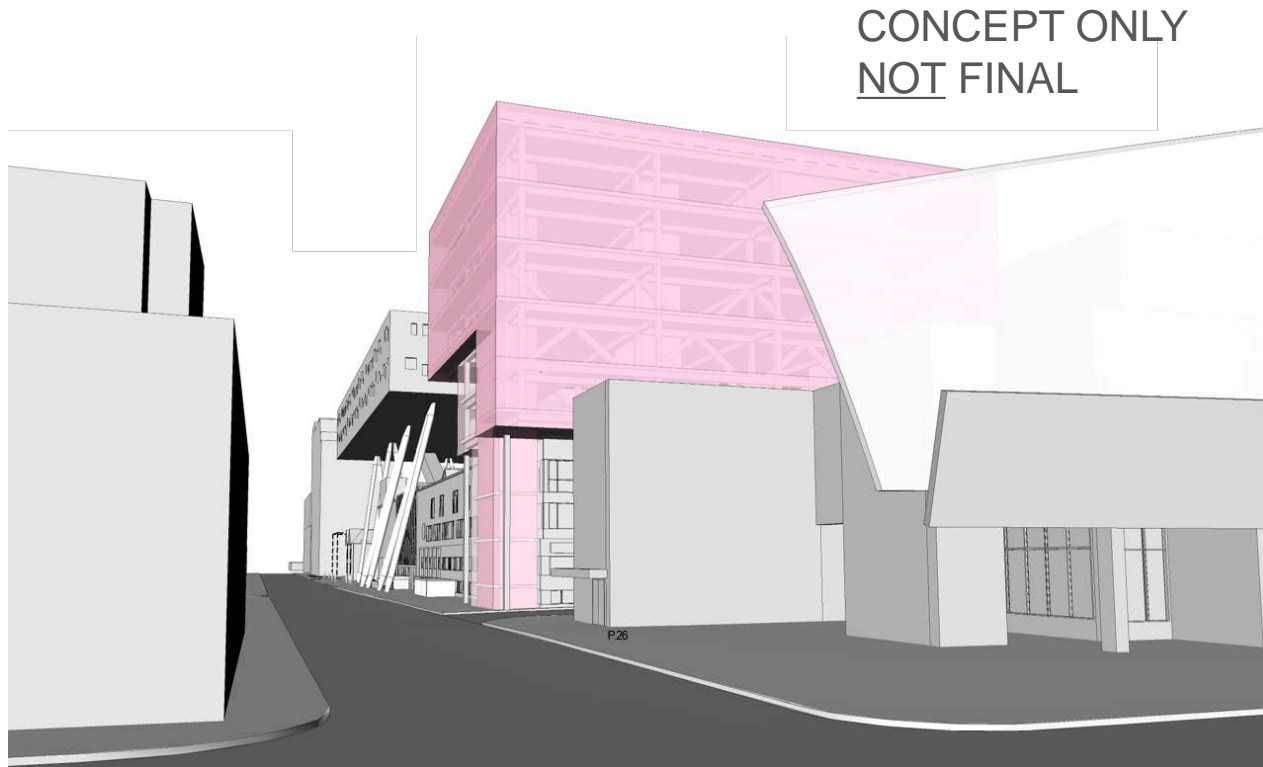
STUDY: NORTH (REVISED)

- Relocation of elevator shaft to outside of main building
- Structural approach that enables larger floor plates



STUDY: NORTH (REVISED)

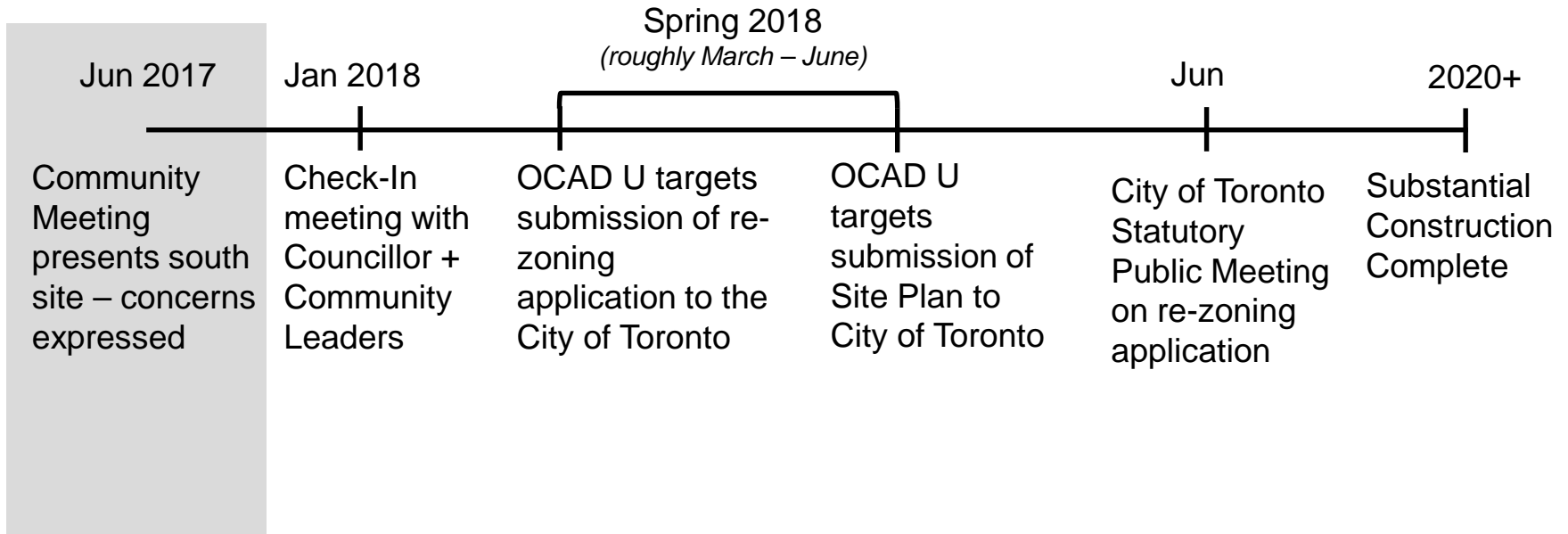
- Responds to urban context including Sharp Centre and the AGO
- Provides for opportunity for displays and transparency into OCAD U programming



AERIAL VIEW: NORTH



NEW PROJECT TIMELINE



**HERE,
OVERACTIVE
IMAGINATIONS
ARE A
GOOD
THING**



For additional information and questions:

creativecitycampus@ocadu.ca

ocadu.ca/creativecitycampus